

More Memories Together

2015-16 ANNUAL REPORT

 CancerCare Manitoba
FOUNDATION

All funds raised stay in Manitoba.

CancerCare Manitoba Foundation (CCMF) fundraises exclusively for CancerCare Manitoba (CCMB). Since 2000, through the generous support of thousands of caring Manitobans, the Foundation has granted more than \$98 million to help CCMB deliver the best research, treatment, patient care and support.

This year Manitobans continued to trust CCMF with their donations. We are stewards of these dollars and are so proud to tell donors exactly how and where their money was spent. This report is for the fiscal year ending March 31, 2016.



On the cover: *A Journey of Milestones.*
Carl Bittner pictured with his wife and daughters

More Memories Together

INSIDE:

- 1 Message from the Chair and CEO
- 2 Donor Dollar Impact
- 3 A Journey of Milestones
- 6 Next Generation: Driving Research Forward
- 7 Clinical Trials / Prevention & Early Detection
- 8 AfterCare Program
- 9 Signature Events
- 11 Individual Donors
- 14 Corporate Donors
- 16 Community Events
- 19 Our Board and Committees
- 20 Financial Statements



Together we accomplished so much.

Our valued donors, volunteers and sponsors – YOU made this year outstanding. We are truly grateful for your incredible and unwavering support. Your contributions – financial and time – profoundly impacted our ability to help CancerCare Manitoba accomplish its goals.

On behalf of the Board of Directors, we are pleased to share the annual report for the year ending March 31, 2016. The Foundation is the only charitable organization exclusively fundraising for CancerCare Manitoba. Every precious dollar you gift to us stays in the province and helps cancer patients and their families. Your generosity allowed us to grant over \$6.7 million this year to CancerCare to support prevention and detection initiatives, groundbreaking research, clinical trials and patient care programs and services.

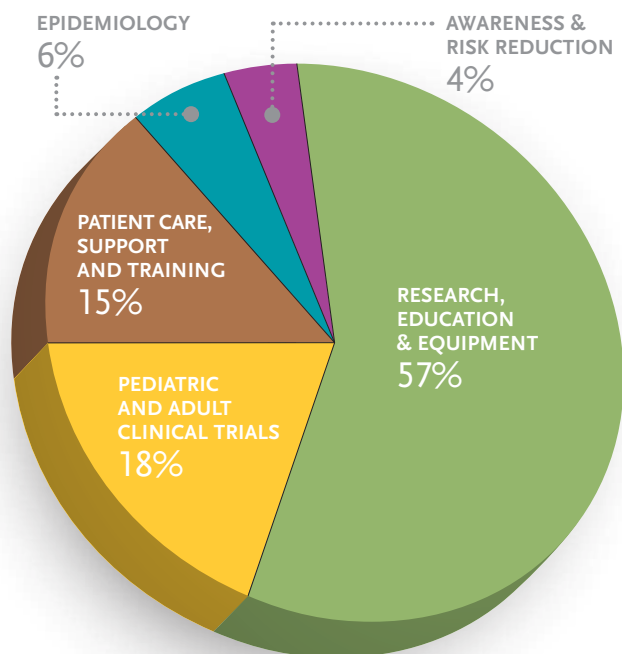
In the pages ahead you will read Carl Bittner's inspiring story. A husband, father of three and a man with a contagious personality, Carl has lived with melanoma for sixteen years. And has he EVER TRULY LIVED! Originally given a 10 per cent chance of survival, Carl has endured many different surgeries and treatments. The tremendously gifted team at CancerCare Manitoba has been with him every step of the way along his journey. He has beat the odds and our generous donors – individual, corporate and community fundraisers – should be so proud that your support has provided Carl and many other patients with the opportunity to experience more memories together with their loved ones and friends.

We are so fortunate to be the beneficiary of the amazing community spirit and philanthropy that Manitoba is recognized for across the country. Thank you for your continued support and belief in the work we do. You touch our hearts and the hearts of Manitoba's cancer patients.

Doug Harvey, CHAIR
CANCERCARE MANITOBA FOUNDATION
BOARD OF DIRECTORS

Annitta Stenning, PRESIDENT AND CEO
CANCERCARE MANITOBA FOUNDATION

DONOR DOLLAR IMPACT



The Foundation's mandate is to support CancerCare Manitoba's strategic priorities by funding programs and services that may not be eligible for government funding.

CancerCare Manitoba Foundation's Board of Directors takes its donor stewardship responsibilities very seriously. Annually the Board considers peer-reviewed research and program proposals submitted by CCMB which align with its strategic plan. Funding requests are thoughtfully reviewed by the Foundation's Project, Grants & Awards Committee and are recommended for approval.

This fiscal year the Foundation provided **\$6.7 million** in funding to support CancerCare Manitoba's strategic priorities.

Specific projects funded in 2015-2016:

RESEARCH, EDUCATION & EQUIPMENT

- Core Operating Budget –
- Research Institute in Oncology and Hematology
- Research Operating Grants
- Studentships and Fellowships
- CCMB Translational Research Program
- Core funding for CancerCare Manitoba training programs
- Manitoba Palliative Care Research Unit Infrastructure Support
- Equipment – Automatic Immunohistochemistry Staining System and High-Throughput Flow Cytometer

EPIDEMIOLOGY

- Core funding for Epidemiology and Cancer Registry

PEDIATRIC AND ADULT CLINICAL TRIALS

- Core funding for Pediatric and Adult Clinical Trials

PATIENT CARE – SUPPORT AND TRAINING

- Camp Indigo – Pediatric Oncology
- Cancer Specific Information and Networking Sessions
- Cancer Patient Handbook
- CCMB AfterCare Program for survivors of childhood cancer
- Community Oncology Professional Development Awards
- Community Cancer Care Educational Conference
- Community Oncology Program Transitions Initiative
- Compression Garments for Sarcoma Patients
- Consultation Recording Service for Patient Support
- Digital Mobile Mammography Coach
- Enhanced Quality of Life and Supportive Care Programming
- Expansion of Breast Cancer Centre of Hope to include support for gynecological cancers
- Guardian Angel Caring Room
- Manitoba Teens Living with Cancer
- Mobility and Self-Management Program
- Music To My Ears
- Palliative Care Initiatives for health-care providers, patients and families
- Patient and Family Resource Centre
- Patient and Family Refreshment Services
- Pediatric Oncology Program – Education Grant
- Perfusion Pump
- The Navigator Newsletter
- Volunteer and Community Based Information and Support Programs
- Web-Based Thyroid Cancer Modeling



A Journey of Milestones

Carl Bittner is an example of what the leading-edge of cancer treatment truly is.

Carl embodies the multitude of options available to cancer patients receiving treatment at CancerCare Manitoba. Carl's case exemplifies how critical a clinical trial can be for a positive outcome. And Carl is an illustration of a life lived with a positive attitude and the impact that positivity can have on a cancer patient journey.

Throughout Carl's experience, he has always prided himself on the fact he has had zero hesitation. Whatever needed to get done, he was ready to tackle it head on. "As aggressive as cancer is, you've got to hit it back just as aggressively," he said.

He would have to lean on that outlook as his fight took many twists and turns. His cancer came back again and again during the past sixteen years, with Carl and his CancerCare Manitoba team having to pivot their approach as new developments arose.

When recounting his story, he is open and unflinching, and always positive and quick to interlace his good-natured humour into any anecdote. A lot of that outlook can be attributed to his support system.

"The three F's: faith, family and friends. I had lots of that. I was surrounded by everything I needed. I got used to dealing with the lows, and when it was hard to go on I told myself 'I can keep doing this,'" said Carl. "I don't know if it was a coping mechanism, but you learn not to get your hopes up too high, but in the same token, don't let it paralyze you."

Carl's journey started in 2000. While working in the theatre business, he noticed a small lesion inside his nose, and was referred to a specialist. What he originally thought might be a polyp turned out to be so much more. The lesion was removed and submitted for testing. The doctor called him back – the news – "you have melanoma." In an instant, his life was turned on its heels. A husband and father of three kids, he was now also a cancer patient.

Although melanoma comprises only four per cent of all skin cancers, it is responsible for 80 per cent of skin cancer-related deaths worldwide. Melanoma originates from pigment-producing cells called melanocytes, located in the skin. Most forms of melanoma occupy only the top layer of the skin. If it penetrates deeper, it is far more dangerous, as it can spread to other areas of the body.

“Some people are frightened by treatment. It’s hard to process,” said Carl. “For me, if Dr. Wong says let’s do this, then *bam*, let’s do this!”

The upbeat Carl however, was not flustered by his diagnosis. “I was feeling great, I was fine. I said ‘yeah, let’s do this.’” His positivity remained despite being told he only had a 10 per cent chance of survival.

Carl underwent an intricate 12-hour operation which had to be carried out in stages. The surgical team had to perform a wide excision to remove the melanoma and a margin of normal skin around it. A frozen culture was taken and sent for testing. They looked at the margins of the cut, to see whether the cancer had spread past the nose and into the lymph nodes. The margins looked good, and they replaced some of Carl’s nose cartilage with some from his ear.

For his long-term recovery, he was under the care of Dr. Ralph Wong, CancerCare Manitoba Oncologist. He was started on Interferon, a chemotherapy drug used to treat

melanoma and other cancers. He took high doses of it, and was in outpatient intravenous every day for the first four weeks. After that, he gave himself a shot three to five times a week for the rest of the year. Carl fought through the side effects, went for scans every few months, and soon five years had passed. His melanoma was not just some hazard in the rear-view mirror though, as there were many roadblocks still ahead.

In 2006, Carl felt a lump in his arm. The lump was removed and diagnosed as melanoma, and immediately a new round of testing began. Carl underwent a PET scan, where his cells and organs were evaluated using a form of radioactive sugar which concentrates in certain areas of the body to determine how far the cancer had spread. A tedious test, Carl wasn’t able to move for hours. The scan detected hot spots in a variety of places: his heart, neck and leg. Carl’s cancer was spreading – it was now stage IV. He would have to undergo drastic treatments.

Just as melanoma is very aggressive, that problem is compounded by the fact that it is chemo and radiation-resistant. Carl would have to start immunotherapy using Interleukin-2. T cells would be removed and genetically enhanced, then re-introduced with the hope they would be better able to boost the immune system’s anti-cancer response.

The immunotherapy treatment could not be administered in Manitoba, as complex therapies are at times, only available in selected centers. In Carl’s case, CancerCare Manitoba facilitated his treatment in Edmonton and later Pittsburgh. In Edmonton he first had

to undergo physical tests to see if he could withstand the treatment itself, as not every patient can handle it. The side effects of the treatment are severe but he faced them with his usual ‘can do’ attitude. He was admitted to the intensive care unit for a week, where he was given a dose of the medicine. He was constantly monitored for any problems with his health, and then once eight hours had passed and his vitals were in order, he would receive another dose, and repeat the experience. He had two weeks to recover, and then it started again for another week.

Even Carl admits, “the process was brutal,” but his attitude to complete it never wavered. “Some people are frightened by treatment. It’s hard to process,” said Carl. “For me, if Dr. Wong says let’s do this, then *bam*, let’s do this!” His body cooperated and responded very well to the grueling treatment.

Three years elapsed and then another recurrence. Interleukin-2 remained the only option, however this time Edmonton wasn’t possible so Carl was sent to Pittsburgh. He flew there three times for weekly treatments, then returned home to the comfort of his family and community for his recovery.

His wife accompanied him on these trips, making the experience more tolerable. Always upbeat and fun-spirited, Carl spun the intense treatments into something positive. “I was the city’s good luck charm. I went, and Pittsburgh won the Super Bowl. Then next time, they won the Stanley Cup!” He concedes his good luck had to run out eventually. “The baseball team, the Pirates, they still stink,” he says, laughing.

During his third bout of treatments, his heart monitor registered an arrhythmia. The doctors told him they had pushed as far as they could and



Carl pictured with his daughter Sara



Carl, wife Ruth and son and daughter-in-law

the treatment was immediately stopped. That spelled the end for Interleukin-2. Another alternative would have to be found. After hearing this news, “you could imagine where I was at with my head,” says Carl.

The beauty of time for Carl is in the nearly ten years since his diagnosis, research progressed and a new treatment option existed. Dr. Wong knew of an upcoming clinical trial that he thought Carl would be perfect for. It was immunotherapy - when the immune system is used to eradicate primary cancer cells. Before he could proceed, he would need an operation to remove potential blockages in his intestines that could cause complications.

This was a pivotal moment in Carl’s journey. The surgery revealed his cancer had spread very far. The surgeon was reluctant to proceed, however Dr. Wong was confident that if completed, Carl was an excellent candidate for the new therapy.

“Until the development of these new immunotherapies, there was nothing further that could be offered to a patient in Carl’s situation,” says Dr. Wong. “Fortunately a new clinical trial became available that showed a great deal of promise for patients like Carl. I felt that he was an excellent candidate for the study and he agreed. His tumours responded very well and he experienced very few side effects.”

Through CancerCare Manitoba’s clinical trial program, Carl participated in the *Multi-center Treatment Protocol for expanded access use of Ipilimumab in unresectable stage III or IV Melanoma*. This allowed him to become the first patient in the province to receive Ipilimumab, and one of less than 70 patients in all of Canada. He received four doses intravenously three weeks apart and had regular CT scans. Throughout, his progress was being evaluated.

“The clinical trial staff follow the protocol specific to the trial,” says Kathryn Dyck, manager of the Clinical Trials Unit. “They ensure tests and treatments are completed and track the patient’s response. The patient experience is closely monitored and all events are carefully documented.”

In 2015, CancerCare Manitoba had 148 clinical trials open for participation, allowing many other patients similar opportunities to gain access to new drugs that can better combat their disease. Donations to the Foundation support additional trials being opened in Manitoba.

After two years in the clinical trial, Carl was able to switch to a new advancement in cancer treatment, targeted therapy. That meant Carl would stop his intravenous treatment and instead take pills, Dabrafenib Mesylate. Unlike chemotherapy, this therapy only targets cancer cells, going after their inner workings, while leaving healthy cells alone.

Carl has responded tremendously to the targeted therapy. A word he never expected to hear – remission – is now part of the conversation with his oncologist. He remains guarded and doesn’t want to get ahead of himself, yet his face lights up when he tells people how well he is doing. He continues to see Dr. Wong every three months, and the prognosis continues to be positive.

“I lived my life in three month chunks,” says Carl. “If I could just make it to this, or just make it to that. Through this whole experience, I’ve never really thought about myself that much, I’ve always thought about my wife and kids. What could I do to make sure they were and would be okay?”

His wife and three children mean everything to Carl and he’s now getting to experience the tremendous milestones that have kept him motivated for sixteen years. He is walking his daughter Sara down the aisle at her wedding this summer. His daughter Lisa is graduating from nursing school. And his son Matthew, who is in the military reserves, has moved back to Winnipeg. With Carl’s wife Ruth by his side, his family is creating more amazing memories together. Carl’s life has been full and rich and with CancerCare Manitoba in his corner, the future looks incredibly bright.



Carl and Dr. Ralph Wong, CCMB Oncologist



Dr. Kirk McManus and his CancerCare Manitoba research team

DRIVING RESEARCH FORWARD

Research into all aspects of cancer is essential to reduce the burden of this complex disease on current and future patients. Since 2000, the Foundation has granted over \$44 million to CancerCare Manitoba to support its research and education initiatives. The Foundation's continued support is key to helping CCMB achieve its strategic goals.

In the 2015-2016 fiscal year, CancerCare Manitoba Foundation invested \$3.84 million into research and education, accounting for nearly 57 per cent of its annual grant to CCMB. The funds were directed to 10 research priorities, including \$1.3 million in core operating support for the Research Institute in Oncology and Hematology (RIOH) and \$800,000 to researchers and clinicians.

Donations to the Foundation are instrumental to CCMB recruiting and developing the best and brightest **next generation** of researchers. At RIOH, graduate students are making important discoveries that will lead to new advances in the treatments of various cancers.

Dr. Kirk McManus, one of RIOH's 19 senior scientists, says CancerCare Manitoba Foundation studentships are vital to driving cancer research forward.

"Our research is hugely impacted and accelerated by the studentships funded through the Foundation, says Dr. McManus. "It's critical that new blood and new ideas can come to the forefront," he says. "Studentship funds go directly to the students themselves, which allows them the freedom to continue their research and attend conferences to further and share their learning."

Amongst the next generation of researchers is Laura Thompson, a fourth-year PhD student who is supervised by Dr. McManus. She appreciates the impact of the Foundation's support.

"Grad students are very important for driving the research forward in the lab. We perform the experiments and collect and analyze the data," says Thompson. "Funding is critical. The quality of work we do wouldn't be possible without it."

Clinical Trials

CancerCare Manitoba's Clinical Trials Unit (CTU) facilitates and coordinates clinical research in the areas of prevention, treatment, palliation and quality of life. The standard treatments available to Manitoba patients today have been greatly influenced by the CTU's multi-decade participation in national and international research.

The Foundation has been a key financial supporter of clinical trials for many years and has provided nearly \$8.2 million for pediatric and adult cancer trials. This year over \$1 million was granted for clinical trials.

Dr. Rajat Kumar, CTU Medical Director, appreciates how significant donor contributions are to offering clinical trials to patients in their home province.

"Clinical Trials offer participants innovative therapies of the future," says Dr. Kumar. "Funding grants from CancerCare Manitoba Foundation provide invaluable support to the CTU in making available a wide range of clinical trials within Manitoba."



Dr. Rajat Kumar, CTU Medical Director

The Foundation specifically supports academic sponsored trials, which provide valuable research that informs cancer therapies, advances innovative drugs and drug delivery, state-of-the-art radiation and surgical techniques, fine-tunes diagnostics and improves the quality of life of cancer patients.



Leah Friesen states what she lives for at her workplace seminar

CancerCare Manitoba is preparing for an estimated 50 per cent increase in the number of Manitobans diagnosed and living with cancer over the next decade. This daunting forecast highlights the importance of cancer prevention and early detection initiatives.

Prevention & Early Detection

"CancerCare Manitoba Foundation is a fantastic supporter of CancerCare Manitoba's cancer prevention and early detection efforts. The messaging about how to reduce your risk is so important – they fit with our overall efforts to 'prevent cancer when you can, find it early if you can't prevent it, and treat it as best as possible,'" explains Dr. Donna Turner, Provincial Director of Population Oncology, CancerCare Manitoba.

GetChecked Manitoba is part of the Prevention & Early Detection program at CCMB. It includes three organized cancer screening programs: BreastCheck, CervixCheck and ColonCheck. The programs' goal? To reduce the number of deaths caused by each disease.

"Finding a cancer early provides the best chance for successful treatment and outcomes," says Dr. Donna Turner. "That is, if a cancer is small and hasn't spread, the person can have very focused treatment and has an excellent chance of surviving."



AfterCare Program

Enduring cancer treatment as a child is a harrowing experience. Fortunately, childhood cancer survival rates have improved dramatically over the years and this has resulted in a large population of childhood cancer survivors. After triumphing over a traumatic disease as a child, these precious patients need support to remain healthy when they return to their routine.

This is where CancerCare Manitoba's AfterCare Program (CAP) comes in. CAP involves a multi-disciplinary approach to assist in meeting the needs of survivors of childhood and adolescent cancer. Survivors are assessed and screened for late effects or problems that can occur after cancer treatment, and to educate patients, families and family doctors regarding these possible late effects.

Kiley Kalyniak from Virden, Manitoba was diagnosed with Embryonal Rhabdomyosarcoma just after her first birthday and had to undergo different radiation therapies over the next four years. She has now completed Grade 5, enjoys playing baseball with her friends, and has recently entered the CAP survivorship program.

Within CAP, Kiley, and patients like her, will have access to Passport for Care, a web-based resource that creates individualized patient summaries to better provide patients with documentation for their diagnosis, treatment, and risk-based recommendations for monitoring.

Healthy lifestyle choices, disease prevention strategies and education are also reinforced as important pillars to CAP and the ongoing success of survivors of childhood cancer.

Generous donors enable the Foundation to provide ongoing support to this essential program.

Kiley Kalyniak after her treatments, and during



Signature Events

CancerCare Manitoba Foundation held four signature events in 2015. The success of these events was based on the Foundation's tremendous volunteer organizers, attendees and sponsors. Thank you so much for your continued enthusiasm, support and belief in our cause. These fabulous events raised over \$1.6 million, accounting for approximately 20.6 per cent of the Foundation's total net fundraising revenue.



MANITOBA DRAGON BOAT FESTIVAL

Paddles Up! On a glorious September weekend, CancerCare Manitoba Foundation partnered with the Children's Hospital Foundation of Manitoba for the 2015 Manitoba Dragon Boat Festival. This three-day 82-team event raised \$306,254 for research, care and support for some of our most vulnerable patients - Manitoba kids with cancer.

EVENT SPONSORS:

BRONZE

Boyd Autobody & Glass
Wawanesa Insurance

Challenge for Life

CHALLENGE FOR LIFE 20K WALK

The Challenge for Life 20K Walk takes place every June in support of cancer research, prevention, treatment, patient care and support. It provides an opportunity for participants to reduce their own risk of cancer by improving their personal fitness.

Five hundred and twenty-three participants walked side-by-side, putting foot-to-pavement at the 8th Annual Challenge for Life 20K Walk on behalf of all Manitobans facing a cancer diagnosis. The 2015 Challenge for Life raised an impressive \$854,244. Cumulatively the event has raised nearly \$8 million.

EVENT SPONSORS:

PLATINUM

Canada Safeway Ltd.

GOLD

Great-West Life

Paterson GlobalFoods Inc.

SILVER

Birchwood Automotive Group
Maxim Truck & Trailer

BRONZE

Canstar Community News
CTV News Winnipeg
Granny's Poultry
Farmers Cooperative
102.3 Kiss FM
Standard Aero



GUARDIAN ANGEL BENEFIT FOR WOMEN'S CANCER

For nearly a quarter century, the Guardian Angel Benefit for Women's Cancer has brought people together for a fabulous evening of friendship and fashion. The 2015 event once again honoured women who have faced – or are currently facing – a cancer diagnosis.

The 24th Annual Guardian Angel Benefit organized by chairperson Judi Bensky, and a committee of volunteer Angels, raised \$428,500. Since its inception in 1992, the annual gala has raised over \$6 million.

Over a thousand women and men were captivated by cancer survivor and guest speaker Dr. Jennifer Arnold of TLC's *The Little Couple*. Cancer survivors revealed their strength and courage as they walked the runway in on-trend fashions.

In Manitoba, cancer is the leading cause of death for females aged 25 to 84. The benefit is the centerpiece of the Guardian Angel's fundraising efforts. Money raised supports tangible advancements in prevention, early detection, clinical treatment, research and patient care, resulting in better outcomes for women diagnosed with cancer.



The Paul Albrechtsen Foundation Inc. table



EVENT SPONSORS:

PRESENTING SPONSOR

The Paul Albrechtsen Foundation Inc.

GOLD ANGEL

Dr Edmond Faridy & Dr Mirla Faridy Investors Group

ARCHANGEL

Great-West Life Power Corporation of Canada Radiology Consultants of Winnipeg Winnipeg Free Press Winpak Ltd.

ANGEL OF HOPE

Adesa Auctions AstraZeneca James W. Burns Duraco Windows Events by Emma Freeman Audio Visual Mid-West Quilting Co. Ltd. Dr Kenneth A. & Judy Murray Natural Bakery Ltd. Qualico RBC Convention Centre Winnipeg Shindico Ten Spa at the Fort Garry Terracon Development Ltd. Urbanmine Inc.



Bottoms Up! committee



BOTTOMS UP! EVENING FOR COLORECTAL CANCER

Bottoms Up! is a cocktail reception style event. This April marked the third bi-annual event raising \$79,315. Three hundred and thirty guests were entertained by the exceptionally talented Canadian comedian and author, John Wing. The event, organized by a volunteer committee headed by cancer survivor Brad Oswald, raises funds for colorectal cancer awareness, screening, and patient care exclusively in Manitoba.

EVENT SPONSORS:

PRESENTING SPONSOR

The Paul Albrechtsen Foundation Inc.

CRYSTAL SPONSOR

Walt Morris Group of Companies

GOLD SPONSOR

Warkentin Custom Homes

SILVER SPONSORS

CTV Winnipeg News DTZ Events by Emma Winnipeg Free Press

Cancer patients and their families from all across the province are the beneficiaries of the tremendous generosity of the Foundation's thousands of individual donors.

We are inspired by your many and varied reasons for giving. We are in awe of your shared passion to eradicate cancer. And we are honoured that you continue to help us support the critical work being undertaken at CancerCare Manitoba.

Below is a list of donors who contributed more than \$1,000 this year. Many of these donors have supported the Foundation for more than a decade and they are identified with an (*) next to their name.

Individual Donors

\$100,000-\$199,999

- * Andrew B. Paterson & Family
- * Arlene Wilson
- Estate of Arthur Hein
- Estate of Ernest D. Kornelsen
- Estate of Nora Lewis
- Estate of Mary Rose Markoff
- Estate of Anne Tuchiwsky

\$50,000-\$99,999

- Abe & Kathy Bergen
- * Donald J. MacDonald
- Estate of Marie Kirk
- Estate of Helen Rosie Thompson

\$25,000-\$49,999

- Ken & Diane Cranston
- Dr William Hryniuk
- Verna Notman
- * Hartley & Heather Richardson
- Anonymous (1)
- Estate of Beatrice Antoinette E. Frederick

\$10,000-\$24,999

- * Earl & Cheryl Barish
- Raymond & Tannis Duerinckx
- Dr Mark Evans & Sharon Evans
- Edmond & Mirla Faridy
- Don & Velma Ferns
- Ted & Lynne Foreman
- * Doug Harvey
- * Ruth & Brian Hastings
- Richard & Hillaine Kroft
- * Paul & Anne Mahon
- Walt Morris
- Wesley Packham
- * J. D. Riley
- Dr Pawan Singal
- Kelvin & Joyce Smith
- Paul Wyrzykowski
- Estate of Marie Clementine Cooper
- Estate of Edith Kathleen Crowston
- Estate of Dorothy Getschel
- Estate of Marilyn Jackson
- Estate of Gordon P. Linney
- Estate of Malvina Schmidt
- Estate of Ida Sullivan
- Estate of Hugh James Walker



DR PAWAN SINGAL

"Despite the best possible medical care by CCMB and other patient support, I lost the most important person, my wife, to cancer. With our support for continued discovery, one day cancer will be beaten."

\$500,000+

- * James W. Burns
- Erica Rogers

\$200,000-\$499,999

Brian & Lois Klaponski/Carte International
Estate of Douglas King Hall
Estate of Michael Shalapata



KLAPONSKI FAMILY

"We stepped up... to make a donation commitment to CancerCare! We toured the CancerCare Manitoba research facility and we were totally impressed with the world-class cancer research happening right here in Winnipeg."

\$5,000-\$9,999

- * Paul & Mary Lou Albrechtsen
- Janice Appleyard
- Leonard & Mary Blankstein
- Bill Brown
- John & Michelle Brownell
- Patricia Cadman & Ed Muzyczka
- Bernard Chabot
- Arthur Hein
- * Simon Hiebert & Rosie Grijalva
- Dr Susan Holt
- Peter & Dana Jessiman
- Hamish & Susanna Laing
- * Raymond L. & Lynne-Anne McFeetors
- Gerry & Cyndi Minaker
- * Dr Kenneth A. & Judy Murray
- Robert Penner
- Henry Penner
- Arthur & Gail Potoroka
- Hal Ryckman
- Raymond & Leanna Senez
- Rohit & Deepa Singal
- Don Streuber
- * Barry & Elane Talbot
- Greg Tallon & Jackie Lowe
- Karen Vermette
- Earl Yetman
- Anonymous (1)
- Estate of Eleanor Buddick
- Estate of Elizabeth Flosszmann

Estate of Anita Anne Gobeil
 Estate of Lilia Marjorie Gardner
 Estate of Thomas Walker Letham
 Estate of Jacqueline Park-Jacksteit
 Estate of Rochelle Putter

\$1,000-\$4,999

Austin C. Abas
 Marilyn Adams
 Kenneth & Marie Adamson
 John & Karen Albrechtsen
 Robert Aldridge
 Dawn Allen
 Pamela Anderson
 Timothy G. Anderson
 Michael & Shauna Angers
 Kevin Anseeuw
 * Gail Asper & Michael Paterson
 Michael R. Averbach
 Richard J. Bahrychuk
 Neil W. Baker
 * Rennie & Heidi Balciunas
 Drs Versha & Shantanu Banerji
 David Barnes
 Kenneth Baron
 Sandra Bazin & family in memory of Bert
 * Neil & Maxine Benditt
 * Bruce & Joyce Berry
 Ryan Berry
 Sheldon Blank, Gateway Industries Ltd.
 Morely & Marjorie Blankstein
 Celia Bollenbach
 Deborah Boni
 * Audrey & Brian Book
 Ronald J. Borys
 Richard & Julie Brodeur
 Jake Brown
 Heather Buchanan
 Michael & Trish Buhr
 Vivian J. Burnell
 Laura Chan
 Dennis Chyborak
 Enso Cilia
 Susan Comack
 Andrew & Pam Conrad
 Sean & Karen Conroy
 * Dr Andrew & Pamela Cooke
 Justin & Sandra Copp
 Robert & Irene Corne
 Marvin Coverdale
 * Dr Piotr Czaykowski
 * Paul Daeninck & Monica Furer
 Dr Dhali Dhaliwal
 Laurence Davis
 * Denis & Debbie Devos
 Donald & Sally Dick
 Carol Doerksen
 Ann M. Donnelly
 Jorge Ducharme

Ron Dunning
 Michael & Karen Egan
 Jason Egert
 The Einarson Family
 Arthur Elias
 Glen & Catherine Eliasson
 Bernie & Betsy Elskamp
 Shirley Eng
 Glen Erb
 Michael Erickson
 David & Catherine Filmon
 * The Honourable Janice Filmon
 & The Honourable Gary Filmon
 Joseph & Raffaella Fiorentino
 Mary Fiorentino
 Diane Fischer
 Carl A. Fleury
 Grant & Linda Floren
 Dr James Forest
 Dawn Fraser
 Bob Friesen
 Robert Friesen
 Kay Froese
 Jodie Gale
 Murray & Laura Gehman
 Cam Giavedoni
 James Giesbrecht
 * Dr Ian & Elaine Goldstine



DR IAN & ELAINE GOLDSTINE

"We have both been impacted by cancer, having lost parents and close friends to this dreaded disease. We also have family and friends who are survivors. Even when treated, cancer sits over your head and forever alters your life. Our support is intended to facilitate and enhance all aspects of dealing with this disease. Our hope is that one day soon cancer will become like diphtheria and tetanus; relegated mostly to history."

Dan Goulet
 * Jim R. & Anne Marie Grant
 * William E. Gray
 * Mark & Anne Gray
 Katie Hall
 Conroy & Lorraine Hamm
 Janet Handel
 Janice Handford

* Gregg & Mary Hanson
 Dr Godfrey & Patricia Harding
 Deanne Harrison
 Jeff Hawryluk
 * Ken & Ruth Hayes
 Keith Heming C.M., Q.C.
 Evelyn Hind
 Carol Hitchon
 Claude Hogue
 Ed Holik
 Melvin & Jane Holod
 Donna Holz
 Aubrey Hope
 David & Dianne Horne
 Denise Horton
 Jim & Gaylene Hunter
 Jeff Itzkow & Dr Cathy Moser
 * Bruce W. J. & Shelley Jack
 Robert Jackson
 Margaret Jeffries
 * Dave & Kathy Johnston
 David Johnston
 * Kevin & Katie Kaiser
 Joanne & Rodney Kamins
 Grace Karpinsky
 Lisa Kasdorf
 Hartley Katz
 * Dr Laurence & Zoe Kogan
 Chad Kenwood
 * Donald G. & Lorraine Kiffic
 Connie A. Kines
 William T. & Motria Koltek
 Jake & Gail Krahn
 * Stefan & Christine Kristjanson
 Kristen Kruse
 Kenneth P. Kuchma
 Richard & Susan Kuffel
 Eileen Lagimodiere
 Michelle Lalancete
 Terry A. Lamontagne
 * J. Robert & Elaine Lavery
 John & Karen Leggat
 Paul Leinburd
 Edna Lentle
 Frank J. Leslie
 * Dr Daniel Levin & Lilian Bonin
 * Margaret & William Lewis
 Kalton & Lisa Loewen
 Pep & Bev Lough
 Brian Lukie & Hannia Tarasiuk
 Jim & Roberta MacDonald
 Catherine MacDonald
 Neil MacKenzie
 Dr Trevor Maguire
 * Sylvia L. Main
 * Lloyd & Marcy Manchulenko
 Gurjit Mangat
 Garth Manness
 Linda March
 Valli Marcoe

Carol Marcotte
 Garry Markham
 * Glenn Marr
 Richard & Louise Marshall
 Gerard Matte & Lydia Surasky-Matte
 Clyde R. & Victoria A. McBain
 Rob & Tammy McBain
 Jean McConnell
 Greg & Bodil McFadzean
 Brock & Donna McIntosh
 Rosy McNabb



ROSY MCNABB

"Every year my son participates in the Challenge for Life along with a great group of kids. We, as a family, participate in this Challenge with a great feeling knowing that the funds we raise stay right here in Manitoba to help others experiencing similar journeys. It is a wonderful way for us to give back and make a difference."

Keith & Olga McNamee
 Dr Robert & Kathryn Menzies
 Peter & Wendy Merks
 Brian Meronek
 * Barbara Metcalfe
 Anita Metcalfe
 Robert Michaleski
 Peter Milinkovic
 Mark Miller
 Gavin Miller
 James & Susan Millican
 Paula Mitchell
 Craig Moffat
 * Hugh & Jennifer Moncrieff
 Catherine Mortimer
 Bryan Mueller
 David & Donna Muir
 * Dan & Kelly L. Murray
 Dr Srisala Navaratnam
 Samantha Nepssy
 * Jeff Neufeld & Katrina Lee-Kwen
 * Dennis E. & Patricia Nord
 * Dr William A. & Gillian Norgate
 James G. Osborne
 Clarine Ostrove
 Henry Paetkau
 Bruce Palansky
 Brian & Gail Parker
 * Bill & Theresa Parrish

Dr Mona Patel
 Kristan Pearson
 * Peter & Anita Pelech
 Allan & Simone Penner
 Fred Penner
 Evelyn Peters
 * Leon R. Pewarchuk
 Glen Pleshko
 Stan F. & Lorraine M. Plett
 * Frank & Jeanne Plett
 Oliver & Genevieve Plett
 * Ivrin & Sandra Plosker
 * Judge Rocky Pollack
 Wayne Pratt
 * Gerald & Barb Price
 David & Joanne Provinciano
 Bob & Marnie Puchniak
 Jackie E. Pyle
 * W. John & Marilyn Rae
 * Edward J. Ransby
 Tara Reid
 Warren Reinisch
 Tony & Donna Reznik
 * Janice Ricken
 Diane Jones & James Ripley
 Rene Ritchot
 Ross & Allana Robinson
 James & Johanna Rodger
 Lee Roth
 * Norman Rozek
 Dave & Shelley Sabeski
 Ashok Sahrawat
 Russ H. & Joan Saladin
 Candy Sammons
 D.G. Sanderson
 Rajiv Saul
 * Greg Sawatzky
 Gregory & Donna Scammell
 * Ernst Schell
 Walter & Sandra Schirmeister
 Greg & Lynne Schmidt
 Margaret Seifert
 Bohdan Shesterniak
 Sean Shore
 Kuldeep Sidhu
 * George & Pam Sigurdson
 Jonathan Sigurdson
 * Donna M. Simister
 Debra Smith
 David L. Smith
 John N & Linda Smith
 Normand Sneyd
 Kathleen Sobie
 Charlie & Dayna Spiring
 John & Nicola Starin
 Ernest Stefanson & Claire Gillis
 Rodney H. Steiman
 Tim Stelmack & Judy Groot
 * Annitta & Ron Stenning
 Jon Stewart
 * Fred & Eileen Storozuk

Geoffry & Patti Stuckless
 Shelley Suderman
 Cameron Thompson
 Gayle Timlick
 In Memory of Abram Derksen
 * Mark & Melanie Tooley
 John B. Topp
 * Marilyn Trepel
 * Brent Trepel & Brenlee Carrington Trepel
 Kathy Turner
 Dr Helmut Unruh



DR HELMUT UNRUH

"Working at CCMB as the Surgical Lead has given me a greater appreciation of the full spectrum of patient services and research CCMF supports. All the money raised stays in Manitoba and I give back by donating to CCMF."

Leslie & Richard Upgang
 Giovanni Vaccaro
 Jody van de Vijssel
 Norman & Adele Walker
 Dr Donna Wall
 * Trudy G. Wall
 Willy Wall
 Tricia Wallace
 Russell Wasnie
 Louise Welsh
 Nathalie Wiebe
 Leslie L. Wiens
 Rudi P. & Cathy Wierckx
 Louise Wood
 William J. Woodford
 * Paul D. & Margaret Wright
 Amanda & Greg Yakubovich
 Daniel & Adele Yan
 * Dr Rochelle A. Yanofsky
 * Mary Louise Young
 Bernice Young
 * Robert & Cindy Yusim
 * Dr Alex & Harriet Zimmer
 Anonymous (14)
 Estate of Robert Forsythe
 Estate of Constance Marie Findlay
 Estate of Molly Holt
 Estate of Mary Ochitwa
 Estate of Perry J. Ross
 Estate of Maureen Swaffer
 Estate of Francis Lynne Sutherland

Corporate Donors

As they have done for so many years, our business community partners supported our goal of raising serious money for a serious cause.

The Foundation is grateful to have so many supporters from all sectors of corporate Manitoba. Your belief that together we can make a difference is profoundly impacting the cancer patient experience.

Below is a list of corporate donors who contributed more than \$1,000 this year. Corporations that have supported the Foundation for more than a decade are identified with an (*) next to their name.



WINPAK

"Supporting CCMF has always been an excellent cause for Winpak; as most of us know someone who has been affected by this dreaded cancer disease. Not only is our company committed to helping in the fight against cancer; but the accountability, operating style and "caring" of the CCMF team reflects the principles of the Winpak organization and its employees. Working with CCMF is a privilege; as we continue to hope for and see advances in the battle against cancer."

Bruce J. Berry
PRESIDENT & CEO
WINPAK LTD.

\$200,000-\$499,999

- * The Paul Albrechtsen Foundation Inc.

\$100,000-\$199,999

- Canada Safeway Ltd.
- The Winnipeg Foundation

\$50,000-\$99,999

- All Charities Campaign
- * Great-West Life
- Jewish Foundation of Winnipeg
- Paterson GlobalFoods Inc.

\$25,000-\$49,999

- * Bison Transport Inc.
- * Delmar Commodities Ltd.
- * Investors Group
- The Pollard Family Foundation

\$10,000-\$24,999

- * Canadian National Railway
- City of Winnipeg Employees Charitable Fund
- * Conviron
- * EMCO Corporation
- Manitoba Hydro
- * MNP
- * NC Machine & Tool Co.
- * Power Corporation of Canada
- * Price Industries Limited
- * RTDS Technologies Inc.
- * Red River Cooperative Ltd.
- * Radiology Consultants of Winnipeg
- * Shoppers Drug Mart
- * Taillieu Construction Ltd.
- * Terracon Development Ltd.
- Warkentin Homes Ltd.
- * Wawanesa Mutual Insurance Company
- * Winpak Ltd.
- 24/7 Intouch

\$5,000-\$9,999

- * AstraZeneca Canada Inc.
- * Birchwood Automotive Group
- * BMO Financial Group
- Canstar Community News
- * Central Plains Cancer Care Services
- CIBC
- Conviron Employee Association
- * Crosstown Civic Credit Union Ltd.
- * Duraco Windows



PATERSON GLOBALFOODS INC.

"Every single life is so important as is the fight for every single life. CancerCare Manitoba leads the Province in treating the 150 types of cancers affecting Manitobans. Funds raised make a tremendous difference in the areas of early detection, treatment, patient care and research. We at Paterson GlobalFoods are proud to be involved with the Foundation for more than two decades, financially supporting the organization that brings so much hope to so many suffering with this terrible disease."

Andrew B. Paterson
PRESIDENT & CEO
PATERSON GLOBALFOODS INC.

- * Edison Properties
- Exchange Income Corporation
- * Fillmore Riley LLP
- * Forum Construction
- Freeman Audio Visual
- * Freightliner Manitoba Ltd.
- * Greystone Managed Investments Inc.
- Investors Group Charitable Giving Program
- * Investors Group Employees In Action
- * Maple Leaf Construction Ltd.
- * Maxim Truck & Trailer
- * Melet Plastics Inc.
- * Mid-West Quilting Co. Ltd.
- * Motor Coach Industries Limited
- * Natural Bakery Ltd.
- NHL Foundation
- * Pro Auto Ltd.
- * Qualico Group Limited
- * Quintex Services Ltd.
- * RBC Convention Centre Winnipeg
- Riverbend Building Supply
- Shindico Realty Inc.
- * Standard Aero
- * Teshmont Consultants LP
- * The Fort Garry Hotel

TJ Rice Family Foundation
Urbanmine Inc.
Veron Consultants Inc.
Wellington West Foundation
* WGI Westman Group Inc.

\$1,000-\$4,999

* ABCO Supply & Service Ltd.
Academy Florist
* Active Builders Limited
* ADA Holding Co Ltd.
* Air Unlimited Inc.
* All-Fab Building Components Inc.
* Amgen Canada Inc.
* Ancast Industries Ltd.
Apptius Computer Solutions Inc.
Architecture49 Inc.
* Arlt Homes Ltd.
Arne's Welding Ltd.
Arthur J. Gallagher Group
Audio Works Production Services Ltd.
* Bacardi Canada Inc.
Barnhart Transport Ltd.
* Beaver Bus Lines Ltd.
Bijou Fine Jewellery
BMO Nesbitt Burns
Bold Innovation Group
* Caisse Financial Group
Calabria Market Specialty Foods
& Fine Wines
* Cambrian Credit Union
Capital Ford Lincoln
Capstone Ridge Group
* Cardinal Capital Management, Inc.
* Carpathia Credit Union Ltd.
Caspian Projects Inc.
Chemo Savvy Inc.
* Chimuk Landry Private Wealth -
Investors Group Financial Services Inc.
* CIBC Children's Foundation
Claude & Sandra Lorange,
Northwest Engineering
* Colony Insurance Agencies
* Credit Union Central of Manitoba
* Crosier Kilgour & Partners Ltd.
* Crossroads Insurance
* D'Arcy & Deacon LLP
* Dawson Kennels
Deloitte & Touche Foundation Canada
* Dillon Consulting Limited
DMS Industrial Constructors Inc.
Domino's Pizza
* Edmond Financial Group Inc.
Enterprise Holdings
* Ernst & Young LLP
Even-Spray & Chemicals Ltd.
* Fidelity Investments Canada
Foster Agency
* Friesens Corporation
FWS Group of Companies

* Gardewine Group Inc.
* Genstar Development Company
* GHY International Jean and Rick Riess
* Golden West Radio
* Granny's Poultry Farmers Cooperative
Guardian Capital Advisors LP
Harvard Developments Inc.
Haskett Growers
Headhunters Recruitment Inc.
Hopewell Real Estate Services Inc.
* HUB International Horizon Insurance
* Imaginet
Inter-City Elevator (2015) Inc.
* Investia WPG
Investors Group - Winnipeg West
iQmetrix Software Development Corp
* J.K. May Investments Ltd.
Jarislowsky Fraser Limited
* K.K. Penner Tire Centers Inc.
* Kay Four Properties
* Keith G. Collins Ltd.
Keystone Masonic Lodge
Kleysen Group LP
KPMG MSLP
* La Salle Insurance Services Inc.
LaempeReich
Lakewood Medical Centre
LanBro Inc.
* Larters at St. Andrews
Laugh Love Cakes
* Lehigh Hanson Materials Limited
Lethbridge Iron Works
Lone Star Farm
* Loveday Mushroom Farms
* MacDon Industries Ltd.
* Manitoba Hydro Employees - Thompson
Manitoba Insulation Contractors
Manitoba Liquor & Lotteries
* McPhillips Station Casino
Mirage Consulting Ltd.
Mutual Fire Insurance Company
of British Columbia
My Tribute Gift Foundation
* National Leasing
Northwest & Ethical Investments L.P.
Ocean Trailer
* Oldfield Kirby Esau Inc.
* Online Business Systems
Payworks Inc.
* PCL Constructors Canada Inc.
Peace Hills Insurance
* Peerless Garments LP
People Corporation
PGA of Manitoba
* Pinnacle Staffing Solutions
* Piston Ring Service
* Pitblado Law
PJ Falcon Inc.
* Poulin's Pest Control
Power and Mine Supply Co. Ltd.

* PRA Inc.
Prairie 360
Prairie Mountain Health
* PriceWaterHouseCoopers LLP
* Princess Auto Ltd.
* Priority Restoration Services Ltd.
* Procuracy Inc.
* Randall Group
* Randall Homes
* Ranger Insurance Brokers
* RBC Dominion Securities
* RBC Foundation
* Red River Mutual
* Rempel Insurance Brokers Ltd.
* Richlu Manufacturing
Riverton Construction Ltd.
Robin's Nest Motel & Cafe
* Rond's Marine Ltd.
* Royal Canadian Properties Limited
Russell Investments Canada
Ryan Downey Wealth Management RBC
Dominion Securities
Schromar Investments Ltd.
Sears Employee's Charitable Fund
Seer Logging Inc.
Servpro
Sierra Systems Group Inc.
* Sigurdson Financial Group Inc.
* SMS Engineering Ltd.
Speciallaser Tech Inc.
* St. James Volkswagen Audi Ltd.
* Stantec Consulting Ltd.
* Starbuck All Charities Inc.
* Steinbach Credit Union
* Taylor McCaffrey LLP
TD Canada Trust
The Alan and Doreen Thompson
Charitable Foundation
The Boyd Group
* The Chinese Buddhist Association
of Manitoba Incorporated
* The Kay Family
The Unexpected Gift Inc.
* Thermo Applicators Inc.
Thompson Dorfman Sweatman
Titanium Consulting Inc.
Top It Paving and Materials
Vipond Inc.
Wendell Estate Honey
* Western Glove Works Ltd.
* Winnipeg Building & Decorating Ltd.
* Winpak Social Club
* Worldsource Financial Management Inc./
Stalker Financial Group
* WOW Hospitality Concepts Inc.
WRE Development Ltd.
WSL Sport and Leisure
* Wyatt Dowling Insurance
Yoga Public

Building memories across Manitoba

Manitoba communities, far and wide, supported CancerCare Manitoba Foundation through a wide-range of events. In 2015-2016 over 300 community events registered with CCMF and raised nearly \$1.8 million. Nearly a quarter of those events occurred in rural communities. Simply amazing!

Several first-time community events such as Ellen's Annual Benefit for CancerCare transitioned into annual events, comprising 48 per cent of all community events. Fifty-two per cent were one-time or first-time events like the Carberry Fair Potato Truck Pull, Growing Support, lemonade stands, and golf tournaments.

To show our appreciation and aid in fundraising efforts, the Foundation provides marketing and other support (upon request) for events registered with the Foundation. Annual events are identified with an (*) beside the event name.

Our Community

\$100,000+

- * Breast Cancer Pledge Ride
- * St. Charles Invitational Pro-Am
- * The Inside Ride
- * Winnipeg True North Sports and Entertainment Hockey Fights Cancer



HOCKEY FIGHTS CANCER

The Winnipeg Jets Hockey Club raised \$171K for CCMF.

\$50,000-\$99,999

- Growing Support for CancerCare
- * Pink Ribbon Ladies Golf Classic
- * Sears National Kids Cancer Ride
- * Techapalooza V

\$25,000-\$49,999

- * 102.3 Kiss Father Daughter Ball
- * Breast Cancer Pledge Ride North-Flin Flon
- * Carberry Fair Potato Truck Pull
- * EMCO Waterworks Annual Golf Tournament & Fishing Derby
- * Kendra's Walk
- * Kick Butt for Colorectal Cancer Walk/Run
- * Lake of the Sandhills Ladies Golf League Charity Tournament
- * Mud Hero
- * Scotiabank Charity Golf Tournament
- * Southwood Daisy Golf Tournament

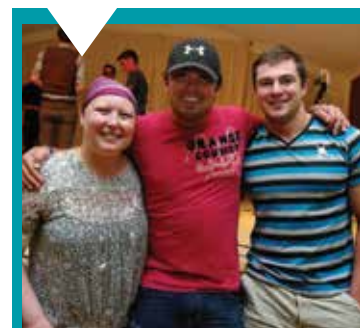


CARBERRY FAIR POTATO TRUCK PULL

Teams pull \$35K for Dawson Smart at the first-annual Carberry Fair Potato Truck Pull.

\$10,000-\$24,999

- * Ambrosie Lighting Pro Am
- Atkins Underground LP - Use Your Head - Protect Your Melons
- Balmoral Hall School Girls for the Cure
- * Carman Curl for Cancer
- * Coffeehouse to End Cancer



COFFEEHOUSE TO END CANCER

On its fifth anniversary, Coffeehouse to End Cancer raised a total of \$49,181.86 for CCMF.

- * Conviron Employee Fundraiser
- Crosstown Civic Credit Union Shred Day
- * Donate a Car Canada
- Elskamp Cancer Fundraiser

- * Emile Moskal Memorial Golf Tournament
- * Female Hockey Fights Cancer
- * Gillam Mother's Day Belgian Waffle Brunch
- * KidFish Ice Fishing Derby
- * Kids Fishing for a Cure
- * Nygard International
- * Peak of the Market Charity Gala Dinner
- * Pembina Valley Twisters
- * Portuguese Women's League Fall Tea
- * Schmenge Brothers Golf Tournament
- * Shirley Fleury Memorial Slo-Pitch Tournament
- * Shoppers Drug Mart Tree of Life Stepping Stones
- * Stonewall Collegiate Hoops for Hope
- * University of Manitoba Aggie Bedpush Kickoff Social
- * Winnipeg Football Club Breast Cancer Game
- * YBN Dale Rempel Memorial Golf Tournament

\$5,000-\$9,999

- * BGC Funding Innovation Inc
- * Bull's-eye Fundraising Walk-a-Thon
- * Chicken Chef Movember Fundraiser
- * For the Love of Lucille
- * George Spiridakos Memorial Golf Tournament
- * Grand Beach to Gimli Swim Across Lake Winnipeg
- * Handemonium
- * Jim Woodman 4 on 4 Street Co-Ed Street Hockey Tournament
- * Kelvin High School Walk-a-thon
- * Live In The Moment Golf Tournament
- * Northern Harbour Welcome to Summer Celebration
- * Pitchin' for Breast Cancer
- * St Norbert Hotel Meat Draws

\$1,000-\$4,999

- * A Pumpkin Promise
- * Amelia & Evelyn Little and Charlotte
- * Erkau's fundraising events
- * Bacardi Maestro Mix Off
- * Ballin' for Cancer Awareness
- * Big Guy's Big Day
- * Big Guy's Ranch & Saloon Golf Tournament
- * Bill & Pat Comaskey Memorial Golf Tournament
- * Bird Construction - Christmas Party
- * Black Sparrow Golf Invitational
- * BMO Fort Richmond Bake Sale
- * Bunge Canada - Breast Cancer Awareness Pink Hard Hat Campaign
- * Bunge Canada Prostate Cancer Fundraiser
- * Calgary Winnipeg Club Golf Tournament
- * Canoe Quest for Cancer
- * Cassia Hair Donation & Bake Sale

- * Christine Brewer's "Give Cancer the Boot"
- * Classic Embers - Spring Fling Social
- * Clifford Fewings 5K Walk to End Prostate Cancer
- * Club 373 Bingo
- * Cupcakes to Cure Childhood Cancer
- * Dane & Avery's Cookies for Cancer
- * Dilawri Crown Auto Group - Trade in a Bad Tie Father's Day Event
- * Eddystone Walk for the Cure
- * Edward Saunders "Cruise Nights"
- * Ellen Walsh's Benefit for Breast Cancer
- * EMF Nutrition Beer Festival
- * End Cancer. Period
- * Ethan's Hour for Hope
- * George Benois Runs the Manitoba Marathon
- * Glen Eden's West St Paul Vintage Snowmobile Show & Swap
- * Gravity Lingerie Fall Fashion Fundraiser
- * Harsh & Smooth 3
- * Henry Derksen Annual Memorial Golf Tournament
- * Infinite Courage Bud, Spud & Steak
- * Janna's Craft Sale in honor of Grandma
- * Jeanette and Carol's Craft Sale
- * Joanne's Retirement Party
- * Jordan & Brayden's Craft and Bake Sale
- * Kicking Cancer Backcountry Style
- * Kildonan East Collegiate Gr 9 Boys Volley Ball
- * Team Prostate Cancer Awareness Event
- * Kildonan East vs Miles Mac WSHSL Game
- * King's Head Pub & Eatery Cancer Fundraiser
- * Krunk for Kendra
- * Larters Ladies Lassie Golf Tournament
- * Lord Selkirk Regional High School Breast Cancer Cure-a-thon
- * Lynea's 11th Birthday Celebration
- * Manitoba Association of Insurance Professionals Golf Tournament
- * Manitoba Dental Hygiene Class of 2015
- * Manitoba Karting Association Rene Berard Classic
- * Manitoba Wall and Ceiling Association Golf Tournament
- * Marcy Schweizer Memorial Derby Horseshow
- * Michael Finkbeiner Scotch Night
- * Moksha Yoga November Karma Charity Event
- * Mon Ami Louis Fundraising Dinner
- * Moulden's Garage Sale For A Cure
- * Murray Gehman's 50th Bud, Spud & Steak
- * Ness Middle School Wake-a-thon
- * Nicolett Inn's Dart for Cancer
- * Onanole RV Park & Campground
- * Toe Jam Music Festival
- * Paul Skinner Memorial Soccer Tournament
- * Pay it Forward Party
- * Piston Ring Service - Pink Flashlight Sale
- * Poulin's Pest Control Holiday Party
- * Ranger Insurance Employee Fundraiser
- * RBC Recognition of Community Service Award
- * Ribbons for Rylan



NESS MIDDLE SCHOOL ANNUAL WAKE-A-THON

To the wall! The Ness Middle School Annual Wake-a-thon raised \$3,879.35 for children's cancer.

- * Selkirk Game & Fish Association Inc.
- * Shaftesbury High School CancerCare Week
- * Shane Johnston Memorial Golf Tournament
- * Showing Up Cancer Horse Show
- * Sikh Community Breast Cancer Awareness Student Fundraiser
- * Smitty's with Friends Fight Cancer
- * St Mary's Academy Walk
- * Stache Bash
- * Starbuck All Charities
- * Striking Out Breast Cancer
- * Sunova CU Breast Cancer Awareness Month
- * Tammi Kroeker: Run, Walk, or Ride
- * Theresa & Mitch's Wedding
- * Tim Lewis Outdoor Winter Classic
- * Wade Campbell's Beard Shave For CancerCare
- * Web Wizards CancerCare Crew
- * Wild Pink Yonder
- * Winkler Access Credit Union - Jeans for Charity
- * Winnipeg Trap and Skeet Club Shoot for the Cure

\$1-\$999

- * ABG Go Pink
- * Adesa Drivers Cup in Memory of Brian Clague
- * Alicia's Fundraiser for CancerCare
- * All Charities Campaign Kick Off Event
- * Amy's Birthday
- * Andee's 12th Birthday
- * Anna's Bat Mitzvah
- * Anthony Kathanan's Pink Z for CancerCare
- * Atticus' Haircut for Cancer
- * Bethany & Ryan's Wedding
- * Big Freight Systems Fundraiser
- * Big Guy's Ranch & Saloon Funspeil
- * Birds Hill Park Barrell Racing
- * Boyd Family Christmas
- * Brandon Home Hardware Ladies Event
- * Brandy & Kevin's Wedding
- * Burnbrae Farms Breast Cancer Awareness Day
- * Buss Stock - Diehards Reunion
- * Cadence's 11th Birthday

Callie & Mason's Bake Sale
 Carman Collegiate Quilt Raffle
 Carson's 8th Birthday
 Celna & Marco's Wedding
 * Charleswood Art Group
 Chiara's 9th Birthday
 Chris & Natalie's Wedding
 Cole Hamblin 3-on-3 Hockey Tournament
 Color Ad Packaging Employee Charity Potluck
 Conor & Finley's Lemonade Stand
 Cruisin' for a Cause
 Cupe Local 4635 Annual Christmas Luncheon
 Daudet Girls Cancer Fundraiser
 Delta Air Lines Winnipeg Day of Hope
 Doheny Securities Friday Jeans Day
 East Selkirk 'Stashes'
 Eastman Flames Ringette
 Breast Cancer Awareness



PINK LADIES / FLAMES

The Pink Ladies / Flames took to the ice and raised \$847.50 for breast cancer.

- Ecole Leila Community School Fundraiser
 Ecole Selkirk Junior High School Breast Cancer Fundraiser
 Ecole Varennes Moverment
 * Ecole/College Regional Gabrielle-Roy Gr 5 Bake Sale
 EIO Annual Golf Classic
 Ella's 11th Birthday
 Erickson Motors Winterize Service Campaign
 Erin's Lemonade Stand
 Extencicare - Tuxedo Villa 2015
 Fox & Fiddle Cancer Fundraiser
 Garrick Hotel's "Tribute to David Bowie"
 George & Evelyn's 60th Anniversary
 * George Richards Big & Tall Menswear
 George Waters Middle School Social Justice Club Cancer Fundraiser
 Get Ready Girls
 * Gib Nordin Memorial Golf Tournament
 Grant Park High School Bake Sale
 Gray Academy April Casual Day for a Cause
 * Gray Academy Youth in Philanthropy
 Hair Pleaserz Cuts for Cancer
 Hedges Middle School Fundraiser
 Helen Perry's Retirement Party
 * Herfindahl's Moverment
 * Hill Top Research Blue Jean Day
 Holy Ghost School Bake Sale
 Icelandic Women's Walk
 Isabel's Bracelet Sales in honour of Grandma
 Jack Ballen's 80th Birthday Party
 Jaedan's Birthday Party
 Joanna & Kevin's Wedding
 Jonas Cheng's Rainbow Loom Bracelet Sale
 Joseph & Tobias' Pie Sale
 Judi Lidstone Memorial Tournament
 Karen Roziere's - Men's Cuts for Prostate Cancer
 * Kenman Creations
 Kim & Steven's Wedding
 Kinderworld Moverment
 * Ladies Tea in Support of Breast Cancer Research
 Laidlaw School Cancer Fundraiser
 * Last Chance Spring Craft Sale
 Leah Jochelson Fundraiser
 Liam Brenan's 13th Birthday
 Liam's Birthday
 Maddy's Birthday & Lemonade Stand
 Magellan Vacations Employee Donations
 * Manitoba Blue Cross Casual for a Cause
 Manitoba Hydro Major Capital Project Chili Cook Off
 Manitoba Hydro Moverment Challenge
 Manitoba Institute of Trades & Technology Fundraiser
 Manitoba Public Insurance
 10 Year Service Award
 * Manitoba Public Insurance Denim Days
 * Manitoba Public Insurance Enterprise Project Management Office Denim Day
 Manitoba Public Insurance Finance Division Denim Days
 Manitoba Public Insurance Gateway Service Centre Casual Fridays
 Maple Leaf School Craft Sale
 Maria DeRose Fundraiser
 Matteo's 11th Birthday
 Megan Magee Craft Sale
 Meghan McLellan & Ryan Dobel Wedding Donation
 Midwest Engineering Employee Fundraiser
 Monique & Tyler's Wedding
 MPI Communications & Community Relations Denim Days
 MTS Operator Reunion
 Natalie & Garrett's Wedding Kissing Game
 Nestor & Pat's Wedding
 Nicholas Elias' 10th Birthday
 Nicky's Hair Donation
 Nicole & Matthew's Wedding
 * Noventis Credit Union Jeans Day
 Olivia's Craft & Bake Sale
 Pineland School Fundraiser
 Piston Ring Service East Fundraiser
 Pony Club Windup
 Reagan & Scott's Wedding
 Rosemarie & Gregory's Wedding
 Rosser Elementary School Bracelet Fundraiser
 * Royal Canadian Legion Gillam Ladies Poker Tournament
 Sam Ferguson's Birthday
 Scott Bodner's Stache Bash
 Seven Oaks School Division - Be Pink
 Shane Markus' Yard Sale
 Sheldon & Samantha's Wedding
 Sigurbjorg Stefansson Early School Muffin Fundraiser
 Sisler High Against Cancer - Breast Cancer Awareness Month
 * Sizzling Dhaba Gives Back
 South East Sno-Riders Vintage Show & Shine & Ride
 Springfield Heights School December Fundraiser
 * St James Collegiate Variety Show
 St Laurent School Gr 7 & 8 Bake Sale Fundraiser
 * St. Boniface Hospital Electrical Shop Fuzzy Faces Event
 St. Vital Centre Behind Closed Doors Event
 Stacie & Joel's Wedding
 Strength is Beauty
 Sunrise School Division School Fundraiser
 Supper Central
 Take Heart
 "Tales of Grandpa Enrique" Book Launch
 Tanis Bannister Pottery
 Tannis Panaschuk Memorial Barrel Race
 The Boyd Group Jeans Day
 The PBAS Group Winnipeg Jets Game Day Dress Code
 Theresa & Riley's Wedding
 Thompson Dorfman Sweatman LLP - Jets Ticket Raffle
 Tracey Lenchuk's Jeans Day
 Trojan's Varsity Football Team Wear Pink
 Tyler & Lindsay's Wedding
 U of W Resident Event
 Victory School Unite to Change
 Virgin 103's Pink Perogies for Breast Cancer
 Visions and Dreams CD Release Party
 Walter Perchaylo Memorial Curling Event
 Westgate Mennonite Collegiate Grad Class of 2014
 Winnipeg Elementary School - Grade 4 Garage Sale
 Winnipeg Hyundai Christmas Party
 Workers Health & Safety Centre Retail Food Service Jean Day



BACK ROW, FROM LEFT: BARB LILLIE, DR. SRI NAVARATNAM, ALYSON KENNEDY, GREG TALLON, KEN CRANSTON, DR. ARNOLD NAIMARK, GLEN PETERS, DR. MARK EVANS, DOUG HARVEY, JEFFREY MORTON, DIANE E. JONES, ANNITTA STENNING SEATED, FROM LEFT: IDA ALBO, STEVEN J. KROFT, JAMES W. BURNS, HAL RYCKMAN MISSING: DR. JOANNE EMBREE, PAUL MAHON, LEE MEAGHER, DR. EMŐKE SZATHMÁRY, RAYMOND L. MCFEETORS, DIRECTOR EMERITUS, ANDREW B. PATERSON, DIRECTOR EMERITUS

CANCERCARE MANITOBA FOUNDATION BOARD

Executive Officers

Doug Harvey, CHAIR
 Ken Cranston, VICE CHAIR
 James W. Burns, SECRETARY
 Jeffrey Morton, TREASURER, FINANCE CHAIR
 Hal Ryckman, MARKETING CHAIR
 Dr. Emőke J.E. Szathmáry, PROJECT, GRANTS & AWARDS CHAIR
 Annitta L. Stenning, PRESIDENT & CEO

Directors

Ida Albo
 Keith Boyd *IN MEMORIAM
 Dr. Joanne Embree
 Dr. Mark Evans
 Diane E. Jones
 Steven J. Kroft
 Paul Mahon
 Lee Meagher
 Glen R. Peters
 Raymond L. McFeetors, DIRECTOR EMERITUS
 Andrew B. Paterson, DIRECTOR EMERITUS

CCMB Board Representatives

Greg Tallon, CHAIR
 Alyson Kennedy, SECRETARY
 Barb Lillie, CA, TREASURER
 Dr. Arnold Naimark, PAST CHAIR
 Dr. Sri Navaratnam, PRESIDENT & CEO, (EX-OFFICIO)

CANCERCARE MANITOBA FOUNDATION COMMITTEES

Project Grants and Awards Committee (PGAC)

Dr. Emőke J.E. Szathmáry, CHAIR
 Keith Boyd
 Maury Donen
 Dr. Joanne Embree
 Dr. Digvir S. Jayas
 Dr. Barbara Triggs-Raine
 Doug Harvey (EX-OFFICIO)
 Annitta L. Stenning, PRESIDENT & CEO
 Dr. Sri Navaratnam (EX-OFFICIO)
 Dr. Spencer Gibson (EX-OFFICIO)

Finance Committee

Jeffrey Morton, CHAIR
 Rick Abbott
 Ida Albo
 Ken Cranston
 Steven J. Kroft
 John Smith
 Doug Harvey (EX-OFFICIO)
 Annitta L. Stenning, PRESIDENT & CEO

Marketing Committee

Hal Ryckman, CHAIR
 Shawna Balas
 Dr. Mark Evans
 Marty Fisher
 Lee Meagher
 Tony Reznik
 Jackie Shymanski *IN MEMORIAM
 Judy Edmonds
 Doug Harvey (EX-OFFICIO)
 Annitta L. Stenning, PRESIDENT & CEO

* The Foundation wishes to recognize the significant contributions of Keith Boyd and Jackie Shymanski who passed away in 2016. Keith served as a Director since 2011. He was also on the Marketing and Project, Grants & Awards Committees. Keith's dedication and passion will be truly missed. We are forever grateful for his contribution to the Foundation. Jackie served on the Marketing Committee. We will always cherish her memory and are so grateful for her commitment to the Foundation.

CCMF STAFF

Annitta Stenning
 PRESIDENT & CEO
 Pam McLeod
 EXECUTIVE ASSISTANT
 TO THE PRESIDENT & CEO
 Patti Smith
 CHIEF DEVELOPMENT OFFICER

Jane Kidd-Hantscher
 DIRECTOR, MARKETING
 & COMMUNICATIONS

Sandra Tym
 DIRECTOR, FINANCE
 & ADMINISTRATION

Lindsay Rayer
 ANNUAL GIVING MANAGER

Kate Gameiro
 EVENTS MANAGER

Nicola Starin
 SIGNATURE EVENTS MANAGER

Tiffany Harder
 SENIOR DATABASE ADMINISTRATOR

Megan Falk
 MARKETING OFFICER

Elaine Scammell
 EVENTS COORDINATOR

Rachel Bueckert
 DEVELOPMENT ASSOCIATE

Donna Laurin
 EVENTS ASSISTANT

Val Pankratz
 RESEARCH & STEWARDSHIP OFFICER

Courtney Sigurdson
 RECEPTIONIST

Carole Courchaine
 ACCOUNTANT

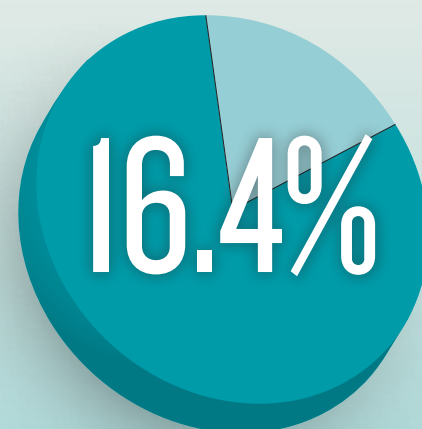
Marissa Trinidad
 DATA MANAGEMENT ASSISTANT

Janice Pound
 DATA MANAGEMENT ASSISTANT

CancerCare Manitoba Foundation Inc.
Statement of Financial Position

March 31, 2016

	2016	2015
ASSETS		
Current		
Cash and short-term investments	\$1,105,353	\$147,728
Accounts receivable	270,498	278,880
Prepaid expenses	255,899	230,615
	1,631,750	657,223
Investments	44,513,762	49,594,008
Fixed Assets	8,519	15,531
Property Development Costs	18,895,036	1,351,534
	\$65,049,067	\$51,618,296
LIABILITIES		
Current		
Accounts payable and accrued liabilities	307,916	\$307,218
Grants payable	2,172,702	1,381,543
Deferred contributions	260,095	237,205
	2,740,713	1,925,966
Mortgage Payable	9,870,000	—
	12,610,713	1,925,966
COMMITMENTS		
FUND BALANCES	52,438,354	49,692,330
	\$65,049,067	\$51,618,296



**Administration Expenses
as Percentage of Total
Annual Revenue**

(Five Year Average)

Our Professional Advisors:

Auditors

Deloitte LLP

Investment Managers

GWL Investment Management
Invesco Canada Ltd.
Jarislowsky Fraser Ltd
Phillips, Hager & North Investment
Management

Custodian

CIBC Mellon Global Security
Services Co.

Solicitors

Fillmore Riley LLP

Principal Bankers

BMO Bank of Montreal
BMO Nesbitt Burns

Asset Performance

Measurement Consultant
GLC Asset Management Group

For complete financial statements including notes,
please contact the Foundation at (204) 787-2244.

Statement of Operations and Changes in Fund Balances

For the Year Ended March 31, 2016

	Ongoing Unrestricted Funds	Ongoing Restricted Funds	Endowment Funds	Capital Funds	2016 Total	2015 Total
FUNDRAISING AND INVESTMENT REVENUE						
Estates & insurance beneficiary	1,572,486	135,000	15,396	—	1,722,882	2,037,092
General donations	1,648,686	485,780	15,424	876,770	3,026,660	1,183,367
Memorial donations	464,047	64,667	1,170	—	529,884	485,427
Events, net	2,488,781	954,143	—	—	3,442,924	3,673,914
	6,174,000	1,639,590	31,990	876,770	8,722,350	7,379,800
Other donations	204,719	—	—	—	204,719	229,670
Realized investment income, net	1,811,919	290,141	597,326	1,216	2,700,602	2,845,995
	8,190,638	1,929,731	629,316	877,986	11,627,671	10,455,465
Capital fund expenses	—	—	—	(70,322)	(70,322)	(28,472)
	8,190,638	1,929,731	629,316	807,664	11,557,349	10,426,993
ADMINISTRATIVE AND PROGRAM EXPENSES						
Administrative expenses	572,507	—	—	—	572,507	537,749
Marketing & communication	205,995	—	—	—	205,995	223,968
Donor development & major gifts	517,293	—	—	—	517,293	436,464
Events & projects	464,219	—	—	—	464,219	493,159
Amortization	7,783	—	—	—	7,783	7,136
	1,767,797	—	—	—	1,767,797	1,698,476
Excess of fundraising and investment revenue over administrative and program expenses	6,422,841	1,929,731	629,316	807,664	9,789,552	8,728,517
GRANTS TO CANCERCARE MANITOBA						
	2,550,822	2,137,160	295,100	—	4,983,082	6,007,811
	3,872,019	(207,429)	334,216	807,664	4,806,470	2,720,706
Unrealized investment (loss) gains	(1,204,575)	(283,367)	(572,504)	—	(2,060,446)	2,374,393
Excess of revenues over expenses and grants	2,667,444	(490,796)	(238,288)	807,664	2,746,024	5,095,099
Fund balance, beginning of year	30,286,499	5,942,012	13,442,991	20,828	49,692,330	44,597,231
Transfer of funds	(1,086,566)	1,085,252	1,314	—	—	—
Fund balance, end of year	\$31,867,377	\$6,536,468	\$13,206,017	828,492	\$52,438,354	\$49,692,330

APPROVED BY THE BOARD

CHAIR



TREASURER



You can reduce your risk of cancer up to 50%



1 Be smoke free

Don't smoke and avoid second-hand smoke and/or Keep Tobacco Sacred!



2 Shape Up

Being active is important to staying healthy and helping to maintain a healthy body weight.



3 Cover Up

Protect yourself and your family from exposure to UV (ultraviolet) rays via the sun or tanning beds, and check your skin regularly for any changes.



4 Eat well

Choosing a balanced diet with plenty of fruits and vegetables will help you maintain a healthy weight.



Dr. Ryan Zarychanski
CANCERCARE MANITOBA

5 Get checked

Follow cancer screening guidelines and report any health changes to your doctor or dentist.

With your help we can reduce the impact of cancer on all Manitobans.

CancerCare Manitoba Foundation is asking all Manitobans to make a difference in the fight against cancer. Please show your commitment by taking the pledge to reduce your risk of cancer.

Please visit cancercarefdn.mb.ca to join us in the fight to **KICK CANCER!**

